



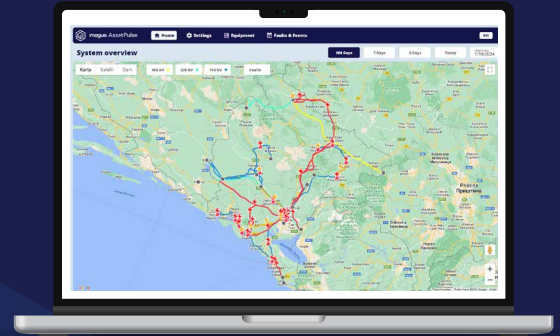
## magus AssetPulse

Centralized software solution for equipment monitoring and events analysis in the power system

**Magus AssetPulse is a software solution for collecting, monitoring and archiving data that enables event analysis and simpler maintenance of power facility equipment.**

### Why Magus AssetPulse?

- lack of highly qualified engineers that can interpret complex events in the power system
- optimization of operational and investment costs in equipment
- simpler adaptation of companies to frequent changes in business processes
- a large number of mismatched data from the power system
- non-correlation of data obstructs the application of complex algorithms for analyzing system performance
- standard software solutions that are not adjusted to engineering needs



## What Magus AssetPulse enables?

- condition-based maintenance of assets in the power facilities
- monitoring and analysis of events in the power system
- automated detection of faults, disturbances and defects
- event analysis by correlating data from relay protection devices, SCADA systems and Comtrade files
- display of power facilities and power lines on an interactive GIS map
- the possibility of storing technical documentation and test protocols
- monitoring trends in power production and consumption, as well as transformer and power line loads
- user-friendly reporting
- active communication equipment monitoring
- integration with different types of numerical devices from renowned manufacturers
- possibility of exchanging data with other applications (customized API)
- unification of signals and measurements by type of numerical devices

